



FIG: 1



FIG: 2



FIG: 3

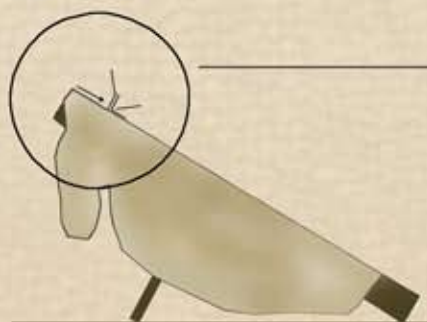
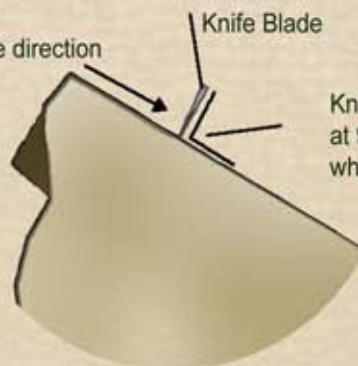


FIG: 4

Flesh in one direction

Knife Blade

Knife should be kept at 90 degrees to the skin when fleshing



All chemicals are best used warmed up. In the case of chemicals stored in polythene containers this can be done by immersing the container in another container of boiling water. REMOVE LID from the sealed container first.

Keep chemicals away from children. As a precaution rubber gloves, an apron and eye protection should be worn when handling the solutions or skins whilst wet. Use a dust mask when decanting and mixing any of the enclosed powders.

May be harmful by inhalation, ingestion or through skin absorption. Severe eye irritant - eye contact may cause serious damage. In case of contact with eyes, rinse immediately with plenty of water and seek medical advice. Wear gloves, apron & eye / face protection.

Run off from rinsing should be disposed of into the foul waste system and not allowed to enter any natural water course.

NOTES

Safety information:

Along with other advice given in this instruction leaflet, please take note of the following-

- Irritating to eyes and skin
- Avoid contact with skin and eyes
- In case of contact with EYES rinse immediately with plenty of water and seek medical advice.
- If SWALLOWED seek medical advice immediately and show this information leaflet.
- After contact with SKIN wash immediately with plenty of water.

K-Tan contains the following;

Chromium Sulphate CAS#10031-37-5
EC number

Aluminium Sulphate 233-135-0

Sodium Chloride 231-598-3

Sodium Bicarbonate 205-633-8

For further advice or in case of an emergency please contact:

Snowdonia Mail Order Supplies

Llanrwst

Conwy

LL26 0HU

Tel. 01492 640 664

Web. www.snowdoniasupplies.co.uk